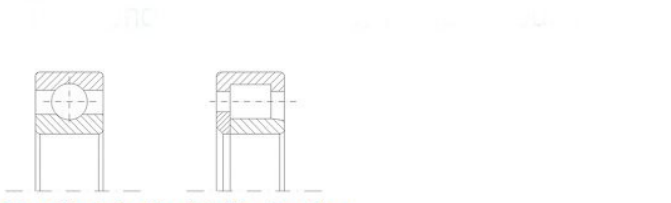
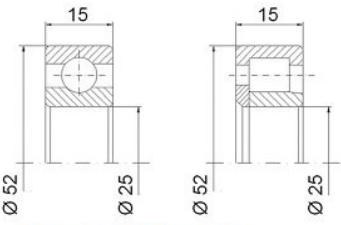


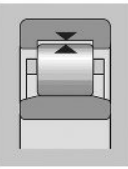
Engine crankshaft bearing...Your choice to win



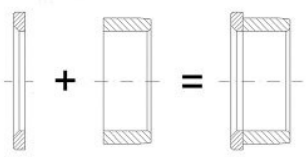
Specific Cylindrical Roller Bearings
Due to its design the load carrying capacity has been increased by more than 200% in respect to the current Deep Groove Ball Bearing. Consequently the life and the rebuild interval will be more than doubled. The stiffness of the system will also be increased and all these features will mean more power and torque from your engine



Mounting Dimensions
This bearing has been designed to equip the major engines around the world. If your main bearing has the overall dimensions 25x52x15 mm it can be easily replaced by this high performance version. You don't have to change anything inside your engine. Before replacing please check the crankshaft tolerances. If your shaft is 25 -0.005/-0.010 mm you will be in the ideal shaft condition on which this new crankshaft support can be mounted.



Specific Radial Clearance
The unmounted radial clearance range of the bearing has been set in order to give a constant and precise engine performance.



Inner Ring Design
The Inner Ring has been designed considering the overall application conditions and the shaft misalignment at the bearing position. Due to the Inner Ring raceway design and the separate side ring we can ensure a good resistance to vibrations and shaft misalignment. This it will mean more reliability even in severe working conditions.

- Technical features
- Specific Roller Design
- Deep groove ball bearing upgrade
- Increased load carrying capacity
- More stiffness of the system
- Increased bearing life
- Extended rebuilding time
- Low friction cage
- Optimized radial clearance

CONTACTS:
Italy - Fabio Falsetti tel. +39 011 9852294
UK - Marc Schollmeyer tel. +44 1582496304
Germany - Alfredo Monetti tel. +39 011 9852469
France - Stéphane Lippis tel. +33 130127319
USA - Kenneth C Fegely tel. +1 7344146754

